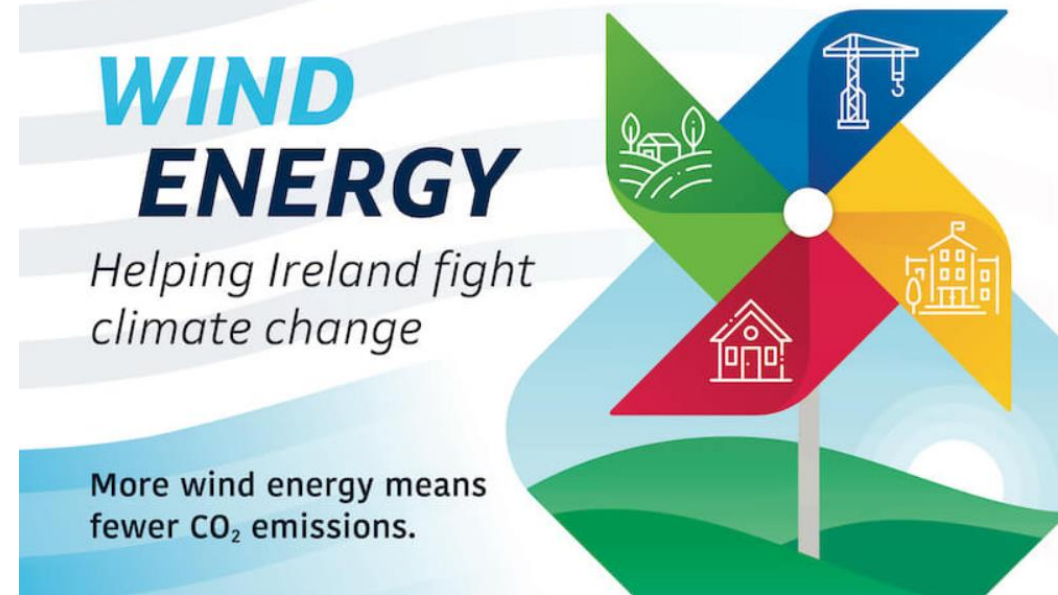


# Agenda

- Hosted by Deputy Catherine Martin of the Green Party
- 10:30 - Dr David Connolly – CEO, Irish Wind Energy Association
- 10:40 - Maria Ryan – Director of Development Ireland, SSE Renewables
- 10:50 - Martin Howley – Programme Manager, SEAI Energy Policy Statistical Support Unit
- 11:00 - Q&A
- 12:00 – Close

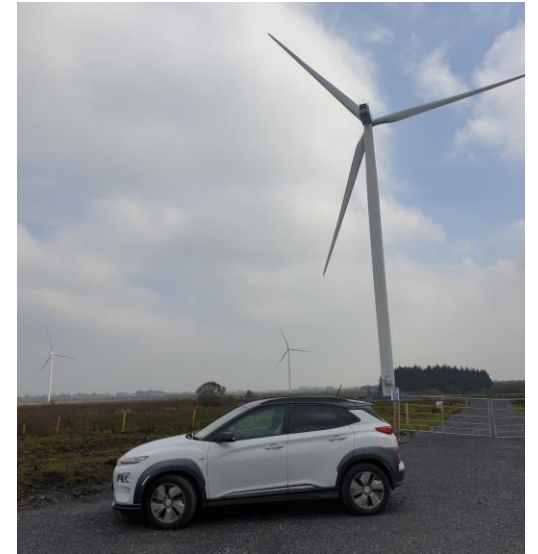




## Unlocking the Potential of Wind Energy in Ireland

21<sup>st</sup> June 2019

Dr. David Connolly  
CEO, IWEA

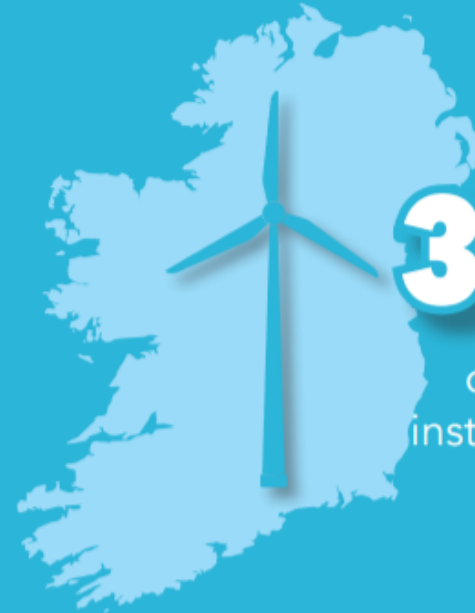


# WIND ENERGY IN IRELAND ANNUAL REPORT 2018 - OUR BEST YEAR YET



## 29%

In 2018 wind energy met a record 29 per cent of our electricity demand – the second highest in Europe.



## 330 MW

of new wind capacity installed in the Republic of Ireland in 2018.

## 19

New wind farms built in 2018.

Now  
**3,566 MW**  
of installed wind capacity.

In January 2018 wind energy out performed gas **over a full month** for the first time.

Record for the most wind on the all-island system **broken three times** in 2018.

Ireland is now #1 in the World for Onshore Wind

Some figures are still provisional and the majority have been compiled by IWEA databases and EirGrid data.

# 2020 Framework was Good Value:

€1/person/year OR  
€2/ton carbon



## WIND ENERGY

Delivering **value** for Irish electricity customers\*



### Less than Euro

Less than a Euro per person per year to deploy wind energy in Ireland



**4.1 GIGA-WATTS**

AMOUNT OF WIND CAPACITY IN IRELAND



**-33 MILLION TONNES**

OF EMISSIONS THANKS TO WIND



**€2.3 BILLION**

SAVINGS IN THE WHOLESALE ELECTRICITY MARKET



**€2.7 BILLION**

LESS SPENT ON FOSSIL FUELS

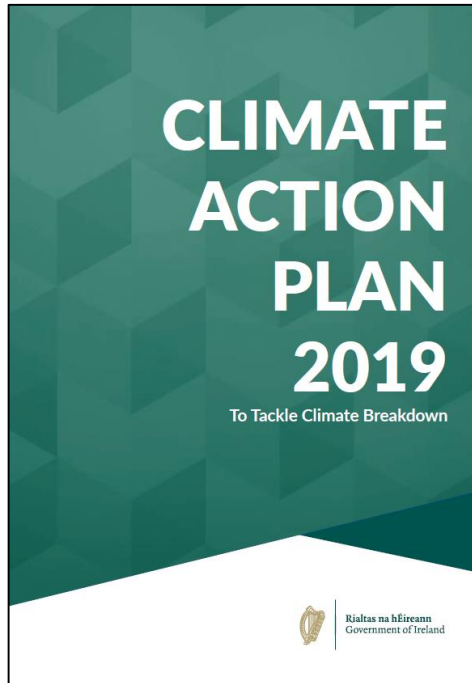
\*SOURCE: COST-BENEFIT ANALYSIS OF WIND ENERGY IN IRELAND 2000-2020

### *Yates Country*

Wind energy can provide a silver-bullet solution to €600m EU climate fines

**Blow me down! Wind energy has cost only €1 a year per person**

# 2030 Game Changer: 70% Renewable Electricity



Requires:

8.2 GW Onshore (3.7 GW Today)

3.5 GW Offshore

**Both Analyses Conclude it is**

**Cheaper**

**&**

**Cleaner**

# Majority of Onshore Wind Communities Support Wind, but We Need to Improve

- **Independent** Research (NUI Galway)
- **250 surveys** of people who live **<4 km** from an existing onshore wind farm
- **40 minutes** with each person
- **~80%** people would keep the wind farm as long as there is sufficient engagement due to other benefits



## Preliminary conclusions and policy implications

- Majority of respondents (82%) are willing to make (monetary) tradeoffs to allow for wind power initiatives and most individuals surveyed are generally supportive of WF
- Negative externalities identified include visual dis-amenities, turbine number, setback distance, electricity export.

Source: <https://community.ieawind.org/iwern/home>

Email: [connect@iwea.com](mailto:connect@iwea.com)

Wind Farm:

Search

Map Satellite

Name: **Skrine Wind Farm**  
 Operator: **CGN Europe Energy Ireland**  
 Capacity MW: **4.6**  
 Commission year: **2011**

More Information  
 Submit a Query

- IWEA member  
 - non IWEA member

Google

Map data ©2019 GeoBasis-DE/BKG (©2009), Google Terms of Use

# Community Engagement: A Step Change

- Defined Commitments to **Engage** at Various Stages of the Wind Farm's Life:
  - Pre-Planning
  - Construction
  - Operation
- Opportunity for Communities to **Invest**
- Five-Fold Increase in Community **Benefit** Funds:
  - Approximately €250,000/turbine (site dependent)
  - If 70% RES-E is delivered, it will result in ~€500 million in direct community benefit





# New Wind Energy Guidelines

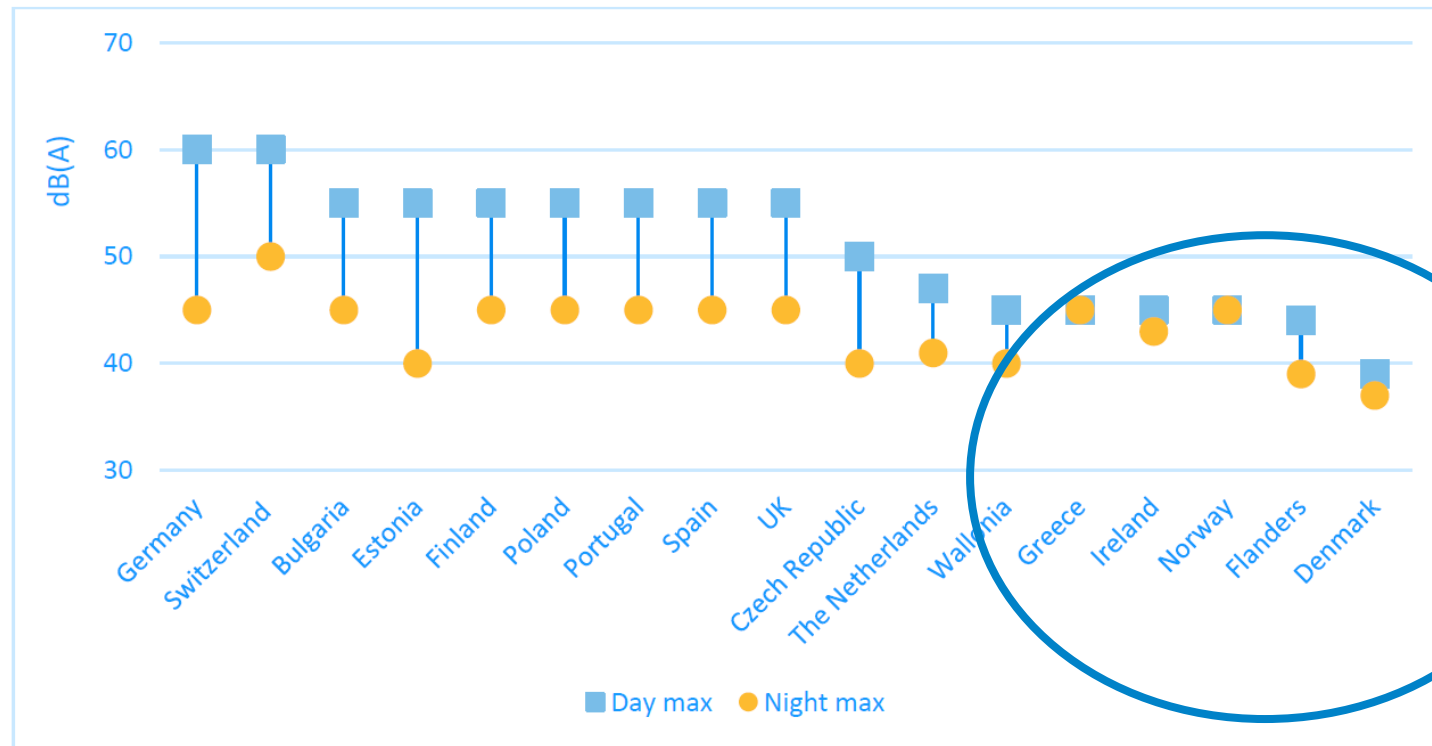
---

- Current guidelines from 2006. Industry has changed and **sensible to update** the guidelines.
- **Concerns** of communities must be addressed.
- But restricting wind energy makes it more difficult & **more expensive** to hit our climate change targets.
- Essential to strike a **balance** to deliver sensible, sustainable wind energy development.

# Existing Wind Energy Guidelines

- (Joint) 2<sup>nd</sup> Strictest in Europe for Shadow Flicker
- 4<sup>th</sup> Strictest in Europe for Noise

Figure 1 Maximum noise limits allowed near residential areas



# Offshore Wind – Ireland open for business?

- Huge potential for renewable energy, with estimated **4-5000 MW** of power off the east coast
- **Floating** turbine technology opening opportunities off our west and south coasts
- Potential 20,000 onshore/offshore **jobs** by 2040 (SEAI)
- **Priorities:**
  - Marine Planning and Development Management Bill, (formerly known as the MAFA Bill)
  - Secure access to grid connections
  - RESS auctions up and running



# We can deliver...

---

- Climate Action Plan Targets
  - 8200 MW of onshore wind from current 3700 MW
  - 3500 MW of offshore wind from current 25 MW
- We have the technology.
- We have the resources.
- We are a world leader in onshore wind energy.
- We **need your support** to make this happen.



# Agenda

- Hosted by Deputy Catherine Martin of the Green Party
- 10:30 - Dr David Connolly – CEO, Irish Wind Energy Association
- 10:40 - Maria Ryan – Director of Development Ireland, SSE Renewables
- 10:50 - Martin Howley – Programme Manager, SEAI Energy Policy Statistical Support Unit
- 11:00 - Q&A
- 12:00 – Close

