

Oweninny Wind Farm: A Case Study in Project Delivery

IWEA Webinar
Wednesday 2nd of September
4.00 pm – 5.00 pm



Submit your questions via Slido.com

Presented by



Jim Mulcair
Executive Chairman at
Roadbridge Ltd.



Presented by



Declan Wynne
Executive Director at
Gaeltec Utilities



Presented by



Michael Cunningham
Senior Project Manager at
Siemens Gamesa
Renewable Energy



Presented by



Nick Norris
Projects Manager at
Bord na Móna



Moderated by



Peter O'Hagan
Project Director at
ESB



Phase 1 Project Partners



Phase 1 Project Finance



BNP PARIBAS



**European
Investment
Bank**



Supported by

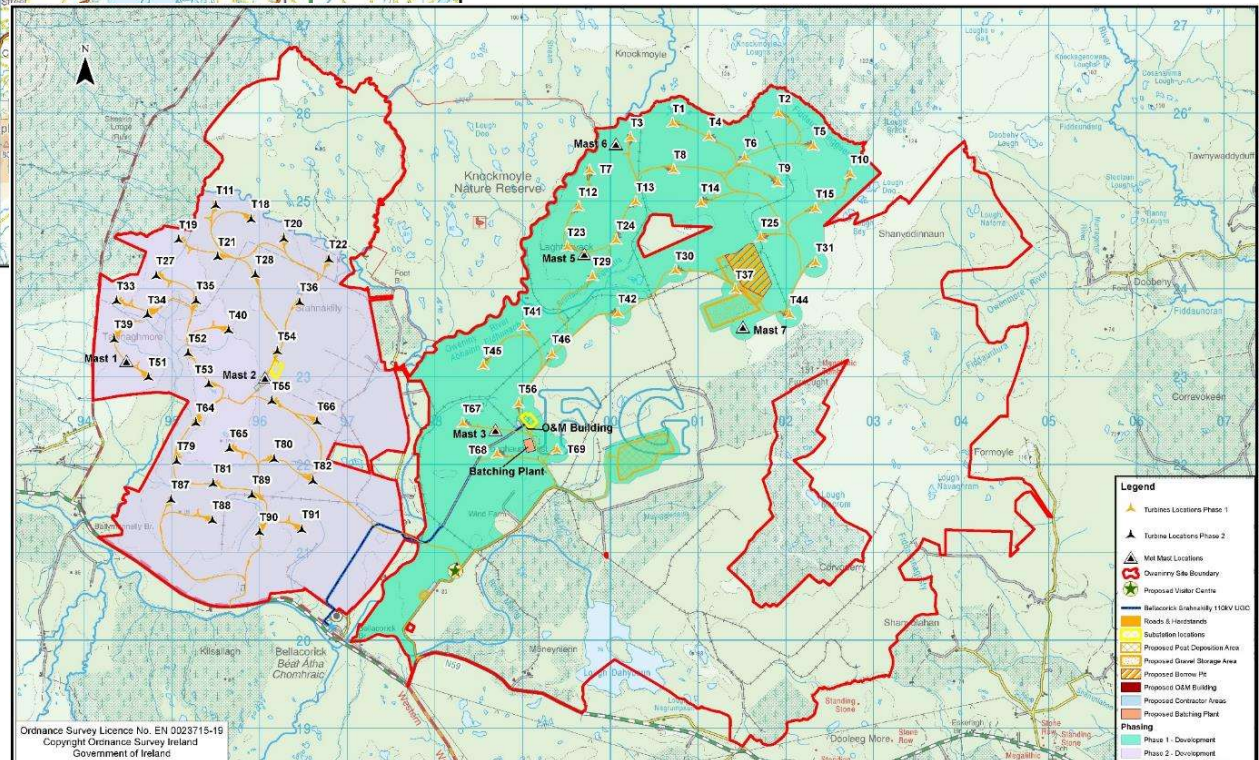
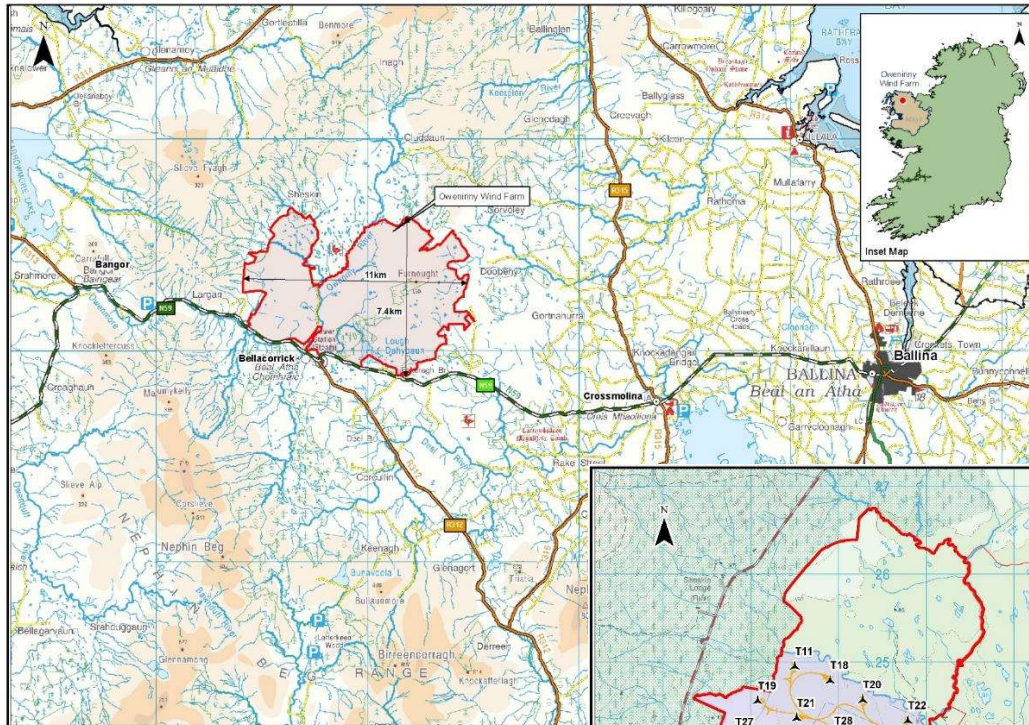


Rialtas na
hÉireann
Government
of Ireland

Tionscadal Éireann
Project Ireland
2040



Location



Oweninny History



Bellacorick Power Station (1963 to 2005)

40MW Output

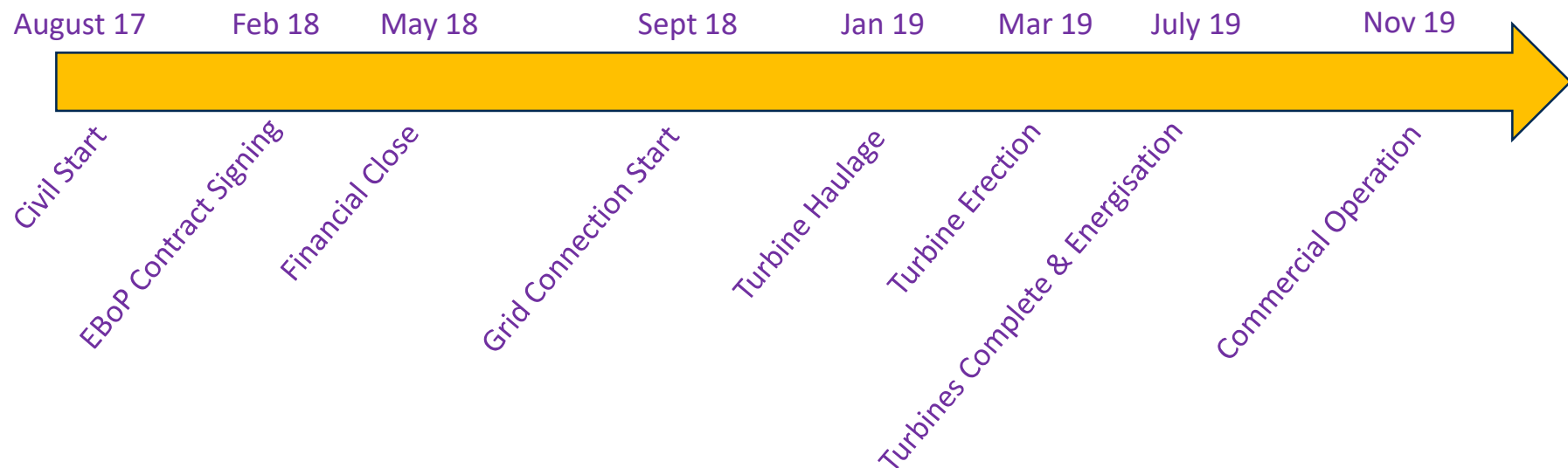


Bellacorick Wind Farm (1992 – Present)

21 turbines, 6.45MW, c. 0.3MW per turbine

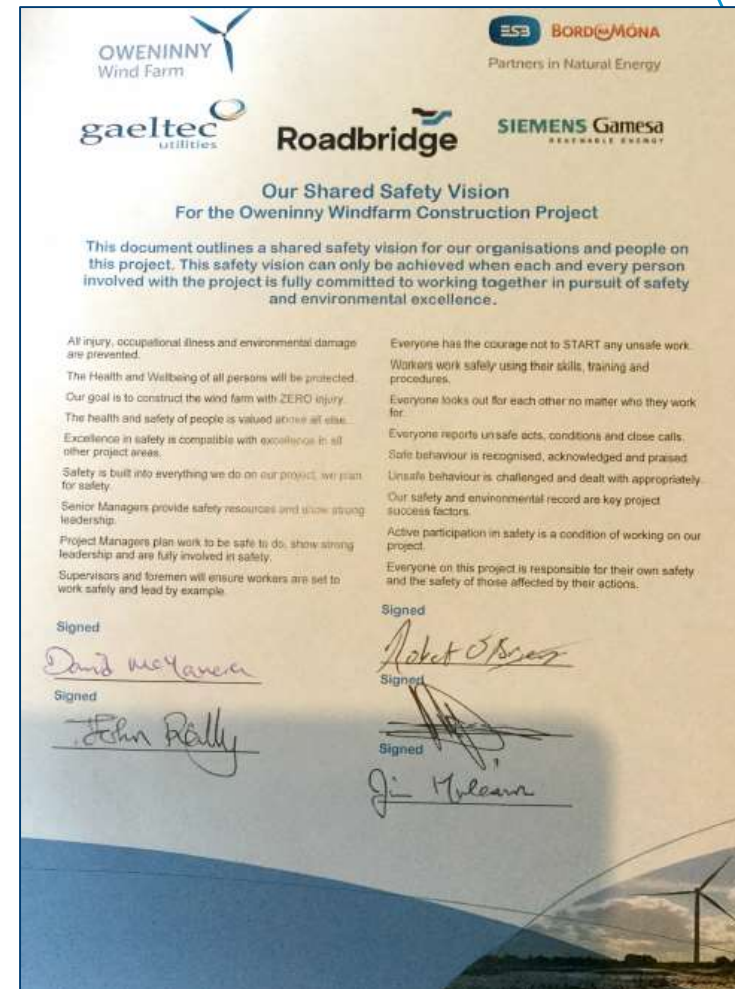
Phase 1 Project Details

- Phase 1 89MW, 172MW with Ph2
- 22nr piled / 7nr gravity foundations
- 29 x 3.2MW Siemens Gamesa DD
- 176m tip height
- 2.5 year main construction period



Key Considerations & Success Factors

- Designing with safety in mind
- Building the right culture
- Project Partner collaboration
- Identifying major challenges
- Adaptability on a challenging project



Safety – What We Tried

- Mental Health Supports
- Safety Stand Downs
- Road Safety Authority – site and community

Real engagement from everyone on site

- *Everyone was empowered to say stop*
- No such thing as a stupid question
- Good catch
- Close call



The Stats



Key Environmental Management Challenges



Service Layer Credits: S
Earthstar Geographics, CN
AeroGRID, IGN, and the GIS

Lough Dohybaun SAC

Bellacorick Bog
Complex SAC

Community Site Boundary

Energy

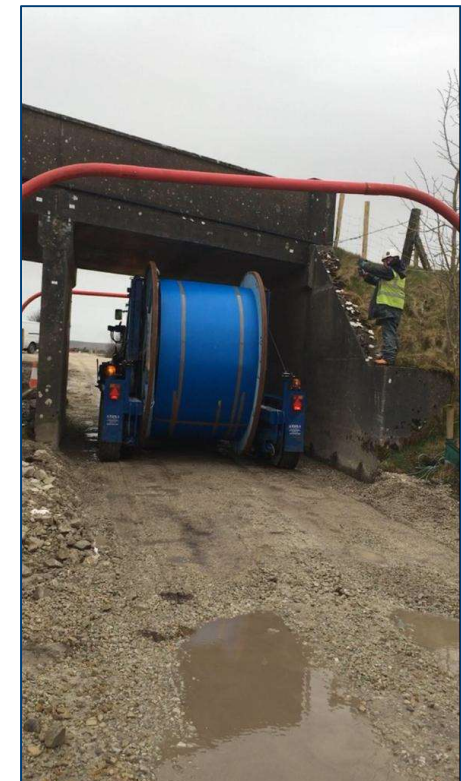
Project Delivery – Civil Works

- Physical Indicators
- Stakeholder Management
- Behavioural Safety
- Local Employment
- 900 mitigation measures in the EIS
 - In-house capability
 - Project Monitoring Committee
 - Transparency with Stakeholders



Project Delivery – Grid Connection

- Scope of Works
- Characteristics
 - Bog
 - Private lands
 - Not in public roadway
- Bespoke Design
- Programme
- Co-operation & Collaboration
- Adaptability



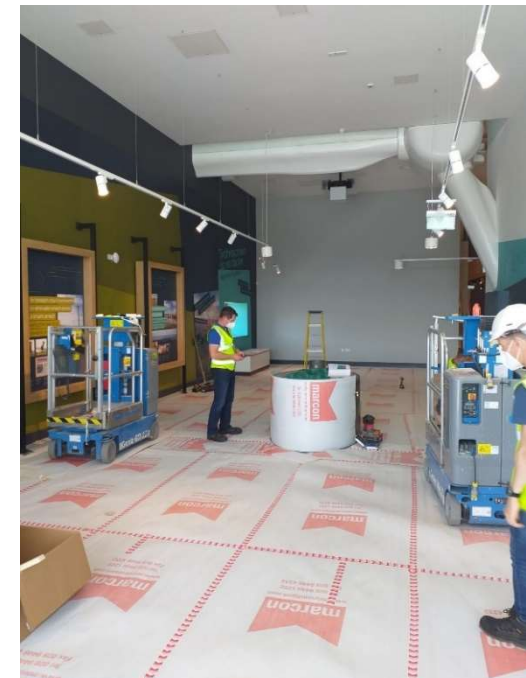
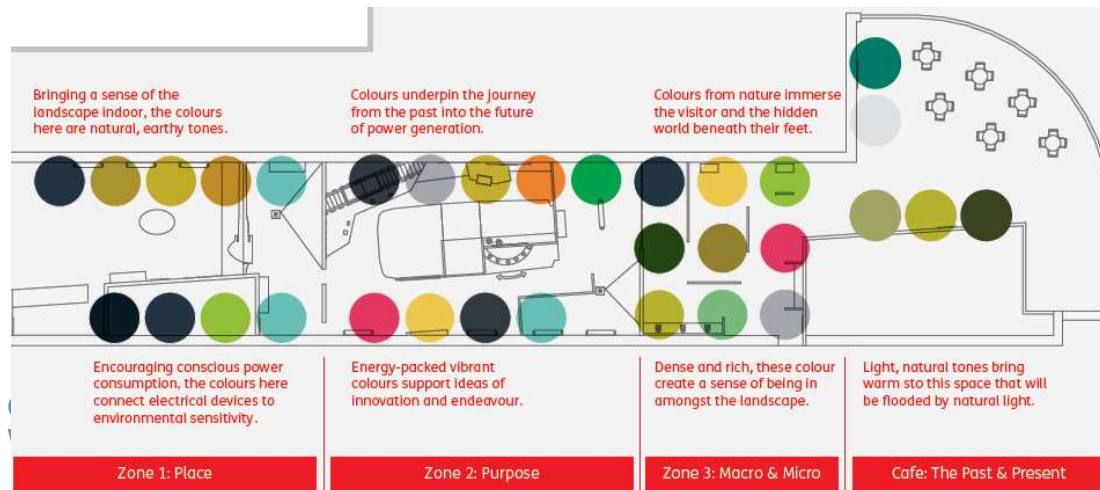
Project Delivery - Turbines

- Challenging route
- Parking in Ballisodare, Ballina & Crossmolina
- Stakeholders
 - Mayo County Council
 - Residents
 - Garda
- Blade orientation
- Site Layout
- Erection Methodology



Oweninny Visitor Centre

- Proposed at planning stage
- €3m investment
- Renewable energy advocacy hub
- Links with development of Western Way & NPWS
- Enhance North Mayo



Community

- Challenge
- Door to door
- Community Benefit Funding,
- Administration by Mayo County Council in conjunction with Oweninny Power
- Phase 2 / RESS level of additional funding



Large Number Of Local Community Groups To Benefit From Oweninny Community Benefit Fund Allocations

Mayo County Council and Oweninny Power Designated Activity Company Ltd. are pleased to announce the allocation of approx. €200,000 to local community groups from North Mayo. The funding comes as a result of a benefit fund to the local communities from the Oweninny Windfarm. The allocations follow extensive



Considerate Construction Awards 2019

- Recognise achievements in the advancement of the considerate construction ethos
- Demonstrates the importance on respecting and caring for the environment, colleagues and local communities
- Improving the image of construction industry



IWEA Project of the Year 2020



Lessons Learned

- Nothing happens without people
 - One team
 - Human approach
 - Common goal
 - Mindset
 - Co-operation
- Watch out for one another
- Try new things and keep trying
- Adaptability



Phase 1 Complete

- Safely
- Great facility
- Pride
- All still talking
- Laid foundation for Phase 2



OWENINNY
Wind Farm



BORD^{NA}MÓNA

Partners in Natural Energy

Naturally driven for a Brighter Future

OWENINNY
Wind Farm



Questions