



# Enduring Connection Policy

## CRU

John Melvin, Director Energy Markets

IWEA Conference  
24 October 2019

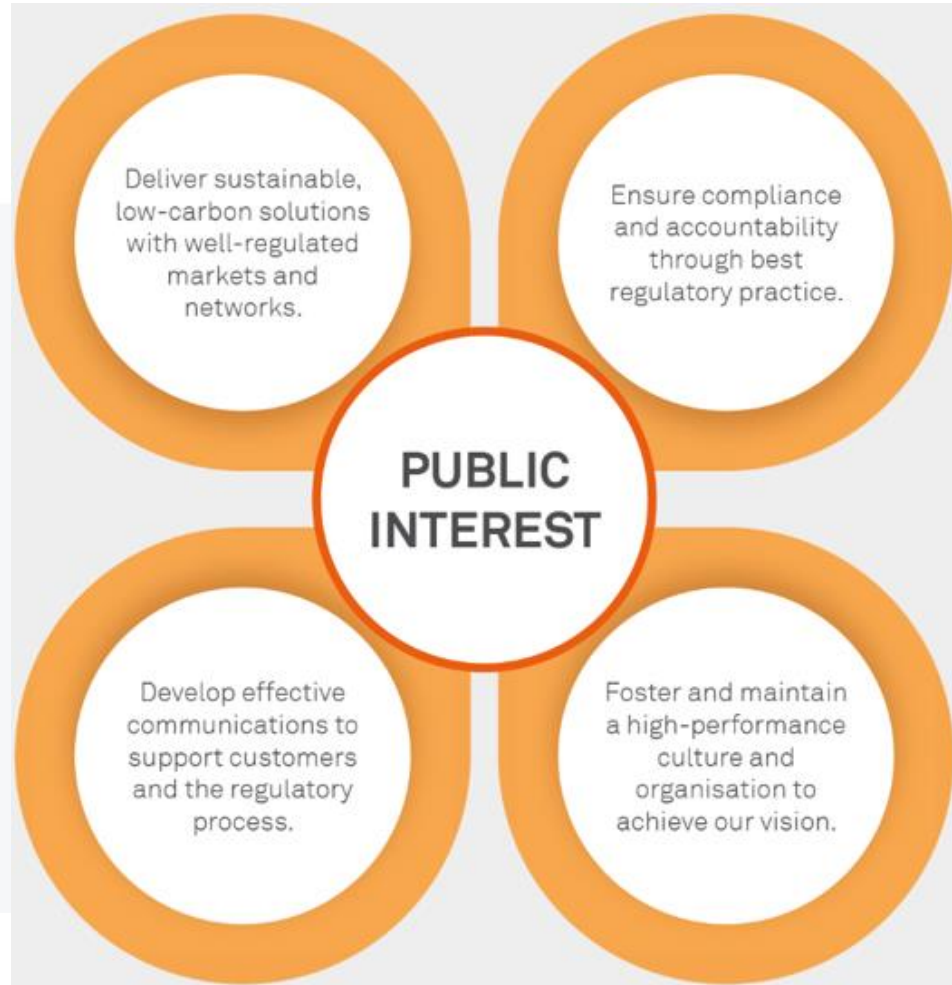


An Coimisiún  
um Rialáil Fóntas  
Commission for  
Regulation of Utilities

[www.cru.ie](http://www.cru.ie)

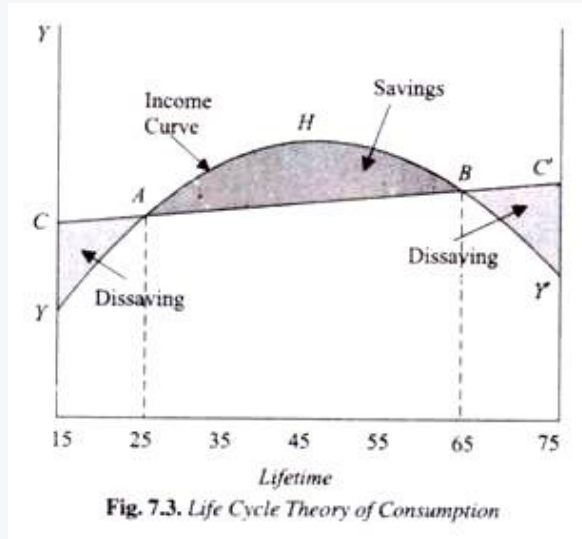
# STRATEGIC PLAN 2019-2021

## STRATEGIC PRIORITIES

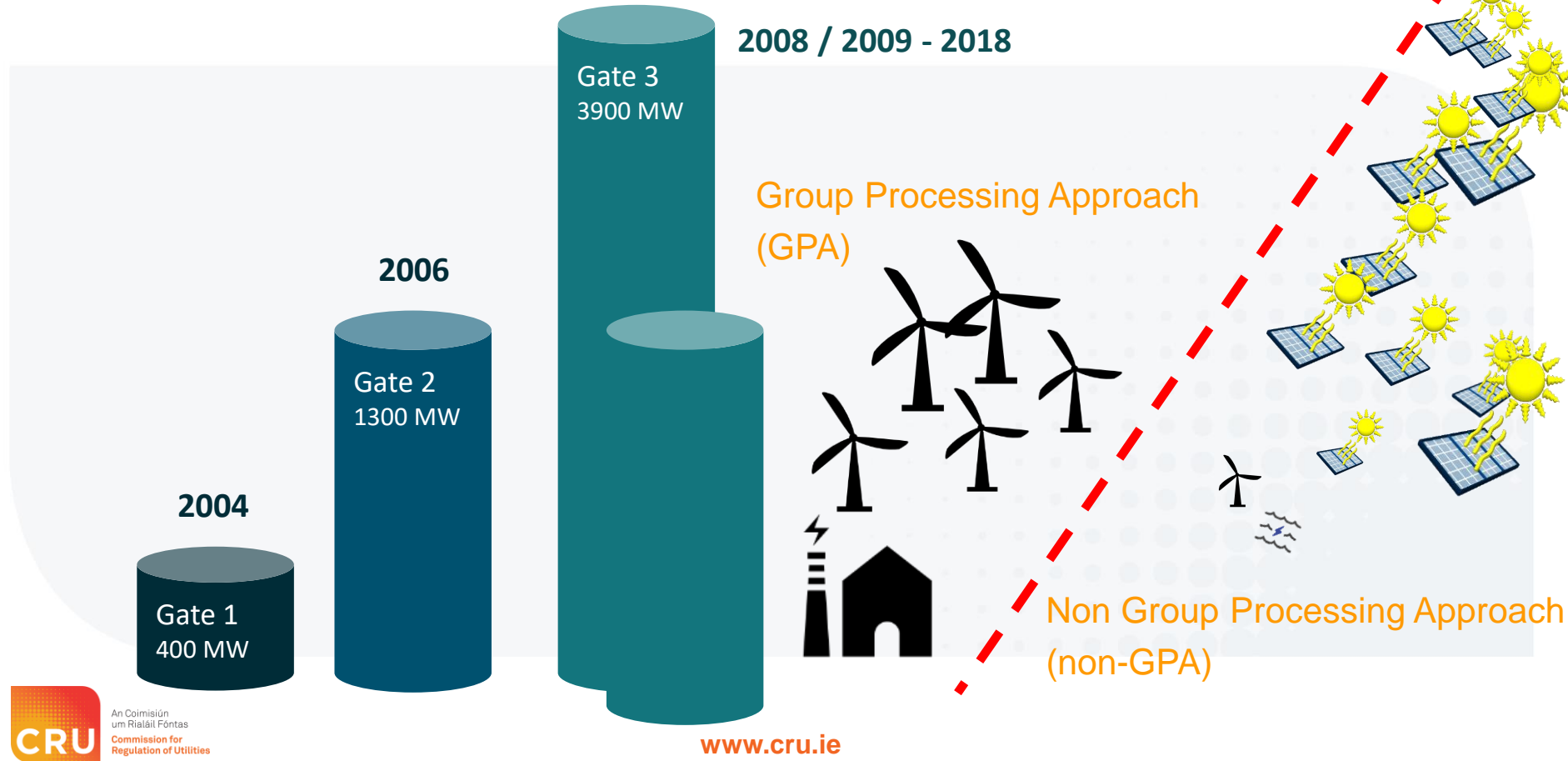


# Talkin' 'bout my generation

We Do Not Inherit the Earth from Our Ancestors; We Borrow It from Our Children (Wendell Berry?)



# Previous connection policy; gate system



## • ECP-1

- **Size:** Provide at least 1,000MW of new connection offers  
**Result: 905MW new + 1,269MW non-GPA fold-in and relocations**
- **Size:** Reserve up to 400MW for DS3 providers  
**Result: 368MW (including 20MW hybrid)**
- **Size:** Non-batch: small-scale gen. (11kW-500kW), DS3 trials, autoproducers - annual limit of 30 offers      **Result: 30 projects**
- **Priority:** Require planning permission (except DS3) & planning expiry priority
- **Commit:** Shared Bonding for projects as of a sub-group
- **Cost:** Apply a revised schedule of application fees
- **Process:** Remove the option to relocate permanently
- **Process:** Keep the non-GPA process suspended as per CRU direction
- **Network:** Issue offers on a non-firm basis

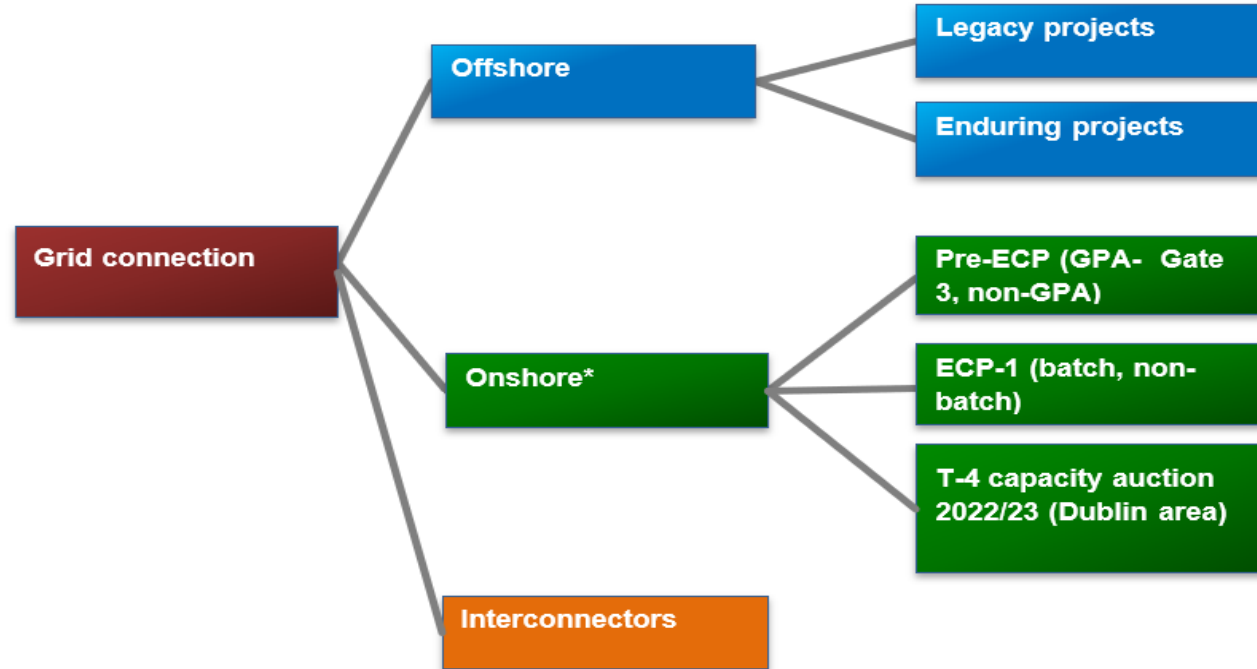
# ECP-2 policy objectives

- Provide objective, transparent and non-discriminatory terms and conditions for connecting new producers...
- ...whilst enabling projects that best align with overarching policy directives and CRU strategic priorities (e.g. low carbon solutions, efficient use of networks)
- Timing and batch size should not hinder auctions schedule or effectiveness (i.e. RESS, DS3, T-4 capacity auctions)
- Maintain batch frequency momentum signaled with ECP-1

# ECP-2 consultation - next steps

- *H1 2019 - CRU stakeholder engagement; listening, gathering requirements*
- *Mid 2019 - CRU drafting strategy for further stakeholder discussion*
- Q4 2019 - CRU ECP-2 consultation – continue on from ECP-1
- H2 2020 - CRU Decision H2 2020
- Q3 2020 (target) - ECP-2 batch processing begins following ECP-1 conclusion
- End 2021 - ECP-2 batch processing conclusion

# Grid Connection Pathways





# Offshore Wind Grid Connection Policy

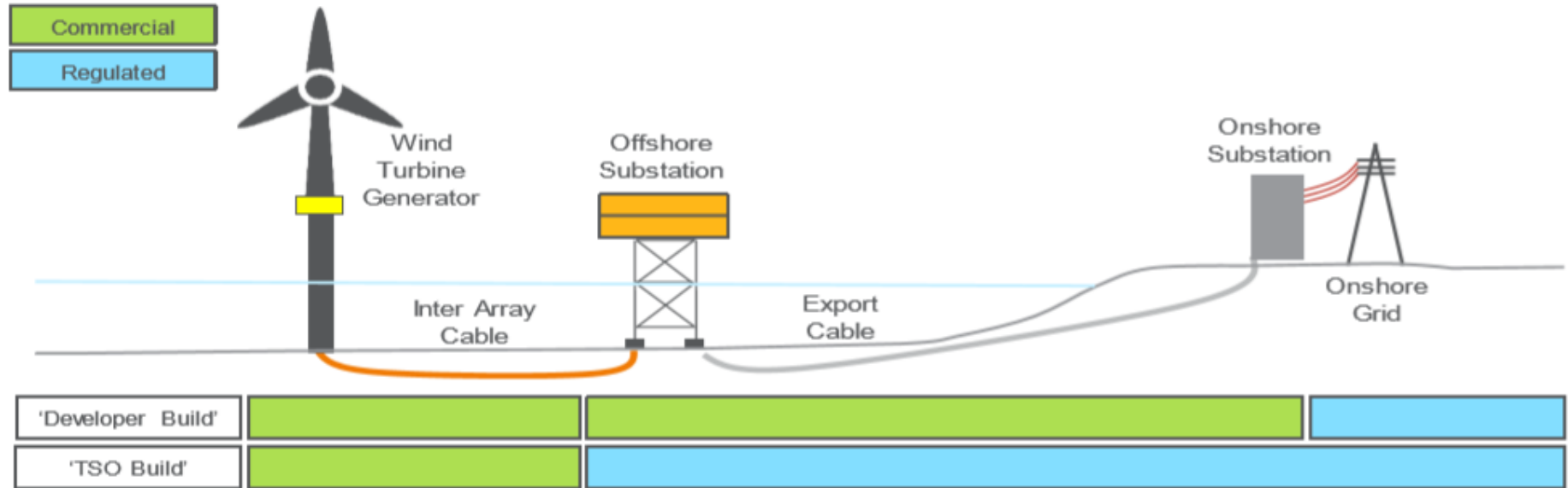
## CRU actions under the CAP:

1. Decision re offshore grid connection for “legacy” pipeline projects (Q4 2019)
  - Awaiting decision from DHPLG re which pipeline projects can be classed as “legacy” i.e. can be progressed under the Foreshore Act.
2. Consult on regulatory framework for offshore wind connections (Q2 2020)
  - Contingent on the progression of the following
    - Decision on National Marine Planning Framework
    - Government decision on offshore grid framework in alignment with NMPF
3. Decision on regulatory framework for offshore wind connections (Q3/4 2020)

\* <http://www.eirgrid.ie/site-files/library/EirGrid/East-Coast-Generation-Opportunity-Assessment.pdf>

# Grid Development Model

Figure 1. Allocation for offshore wind farm and transmission asset development and Operation



Source: Navigant

# ECP-2 Communities

- Process communities in non batch process
  - capped at 15 per year
  - no planning permission required
  - Must meet DCCAE definition (to be confirmed)

# Auctions 101



# Auctions 101



# Auctions 101



rawpixel

# Auctions 101



# Thank You